

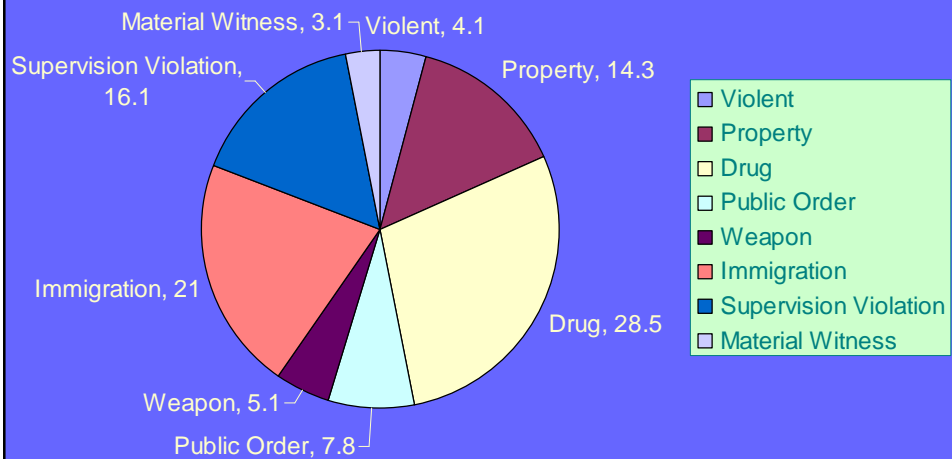
The Criminal Drug User



Changing Behavior

Overview of Corrections Treatment:
OAS – CICAD Meeting D.C. 12-04

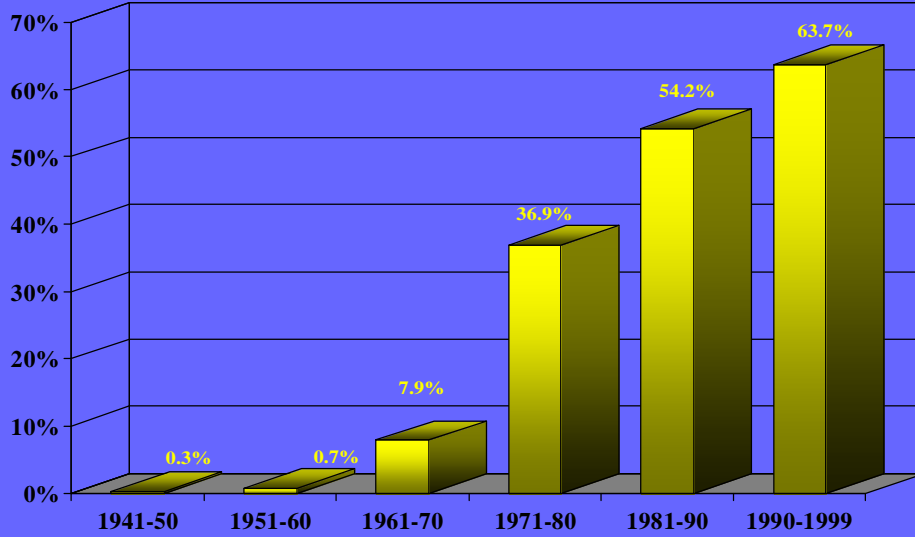
Arrests for Federal Offenses, 2001



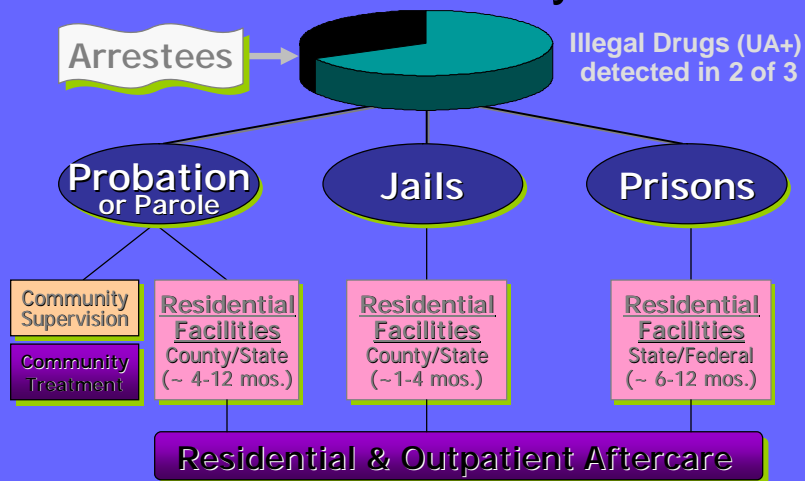
FBI Crime Reports, 2001

Drug Arrests By Decade

(FBI Crime Reports)



Substance Abuse Treatments in Correctional System



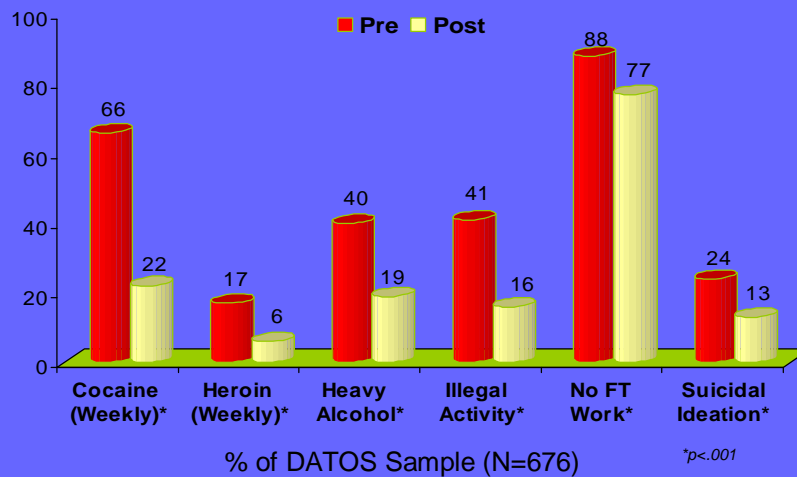
The relationship... between drugs and crime

Drugs and crime can be related in 3
separate ways:

- Ø Psychopharmacologically
- Ø Economic-compulsively
- Ø Systemically

Long-Term Residential (LTR) Treatment

Changes from Before to After Treatment



Why Therapeutic Community for in-prison treatment?

§ What criteria was used to
decide?

§ What is considered successful
treatment – for whom?



Social Criteria for Treatment Success

Established by Dr. Jerome Jaffe - 1974 Nixon appointee
“What do citizens deem important criteria as treatment
success?”

#1 - Diminish crime in community

#2 - Diminish tax consumptive behavior

#3 - Diminish illicit substance use

#4 - Increase tax productive behavior

#5 - Increase personal well being

TOPS - Treatment Outcomes Perspective Study

10,000 treatment admissions were followed for 3-5 years to answer question.

DARP (Drug Abuse Reporting Program) study attached to treatment dollars.

ONDCP – Office National Drug Control Programs

National Models of Treatment

Ø Out Patient Drug Free

...affluent, educated, employed, structured life

Ø Out Patient Methadone Maintenance

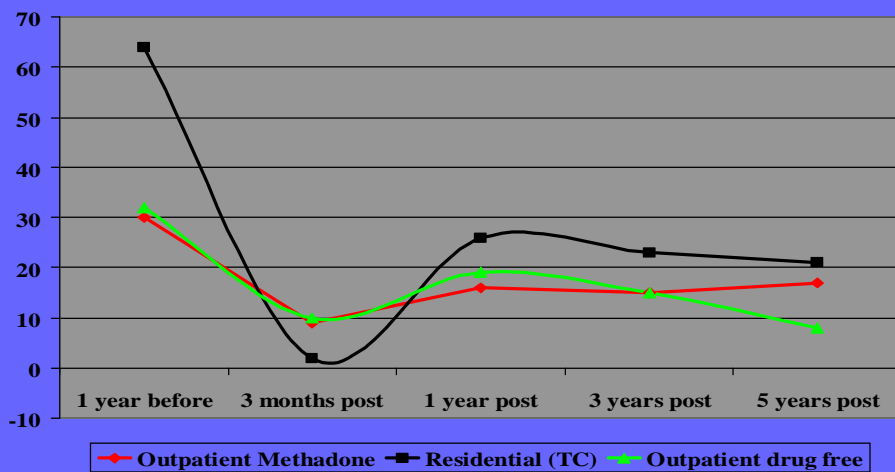
...employed, some structure and support systems

Ø Residential Therapeutic Community

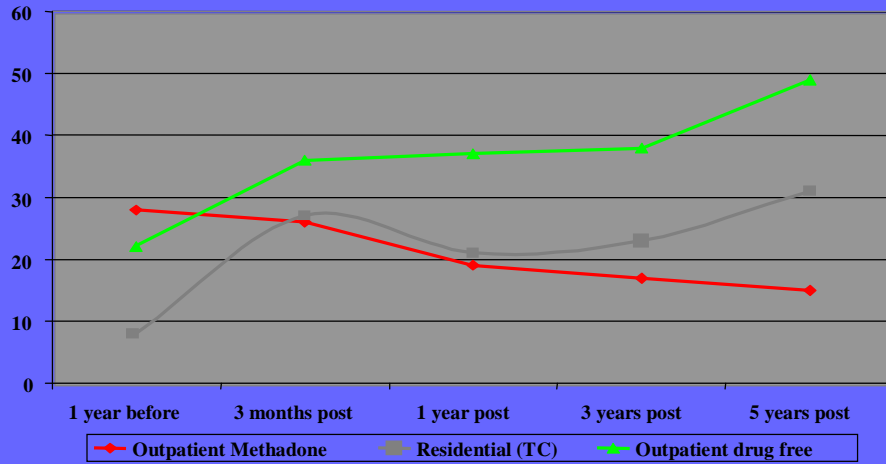
...successes had previous crime involvement, no previous employment, no support systems

Criteria 1- "Diminish crime in community"

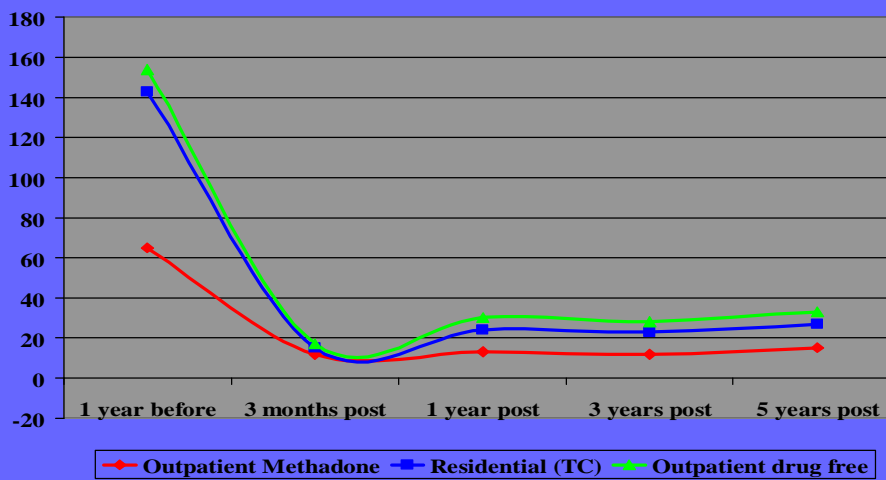
(Change in prevalence of **predatory crime**)



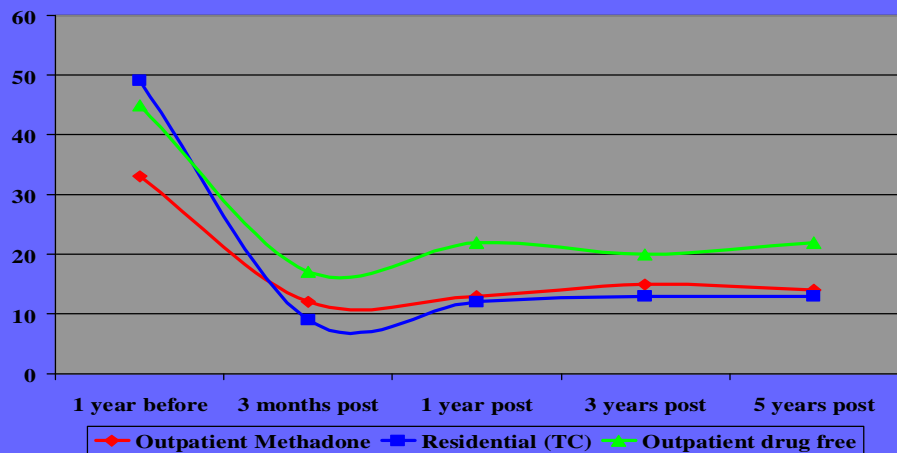
Criteria 2 & 4- Changes in tax related behaviors (full time employment)



Criteria 3 – Diminish illicit drug use (Heroin only)



Criteria 5 – Increase Personal Well-Being (Suicidal Indicators)



Types of Substance Abusing Offenders

***Substance abusing offenders are not a
homogenous group***

A simple classification Model:

Ø The Early Stage Substance Abuser

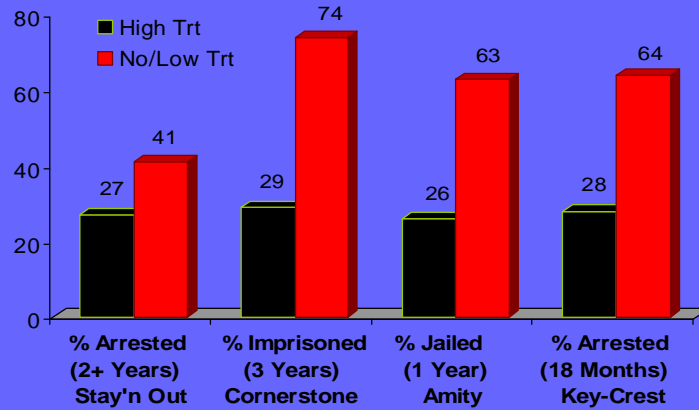
Ø The Addict

Ø The Dually Diagnosed Substance
Abuser

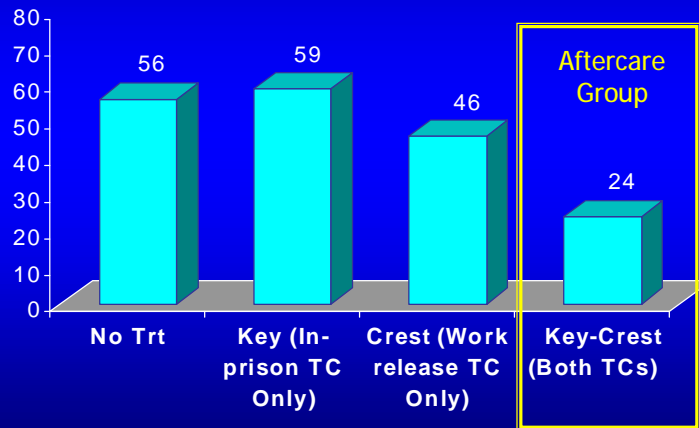
Ø The Criminogenic Substance Abuser

Note: this model does not present clinical diagnostic
classification –
(i.e. not DSMIV).

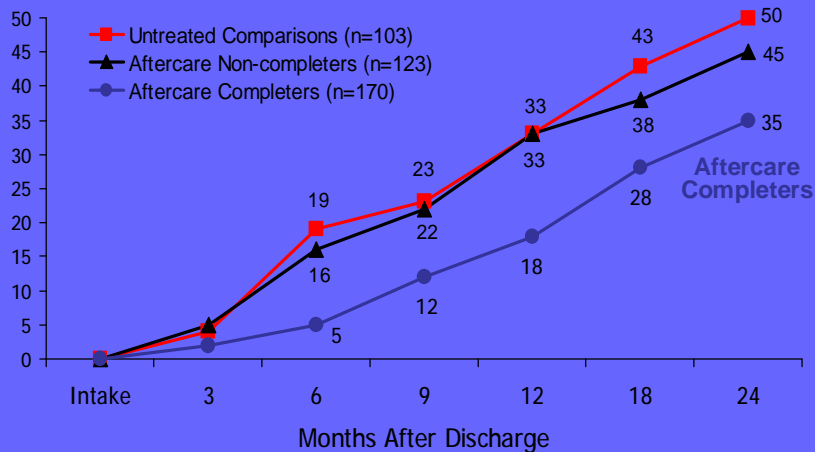
Historical Overview of Prison-Based Treatment Evaluations



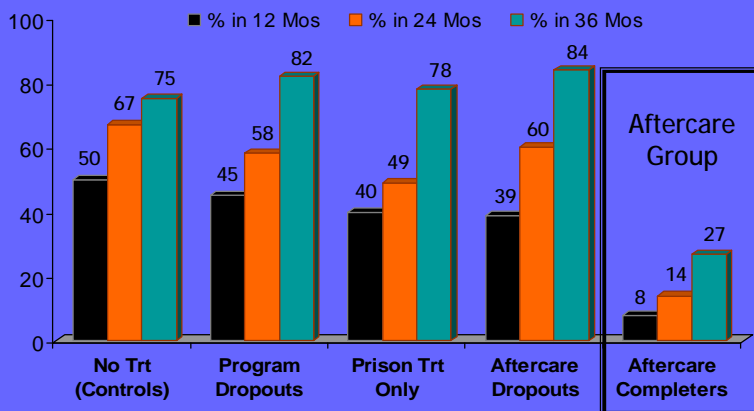
Delaware Key-Crest Program: 18-Month Re-Arrest Rates



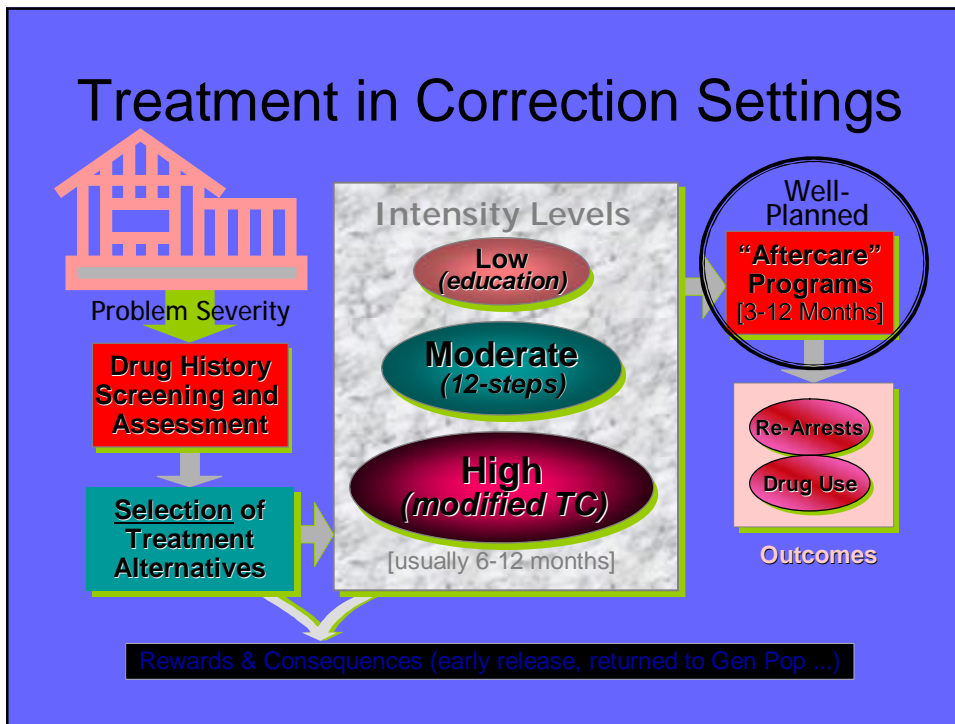
Texas In-prison TC Program: Re-Arrest Rates Over 2-Year Follow-up



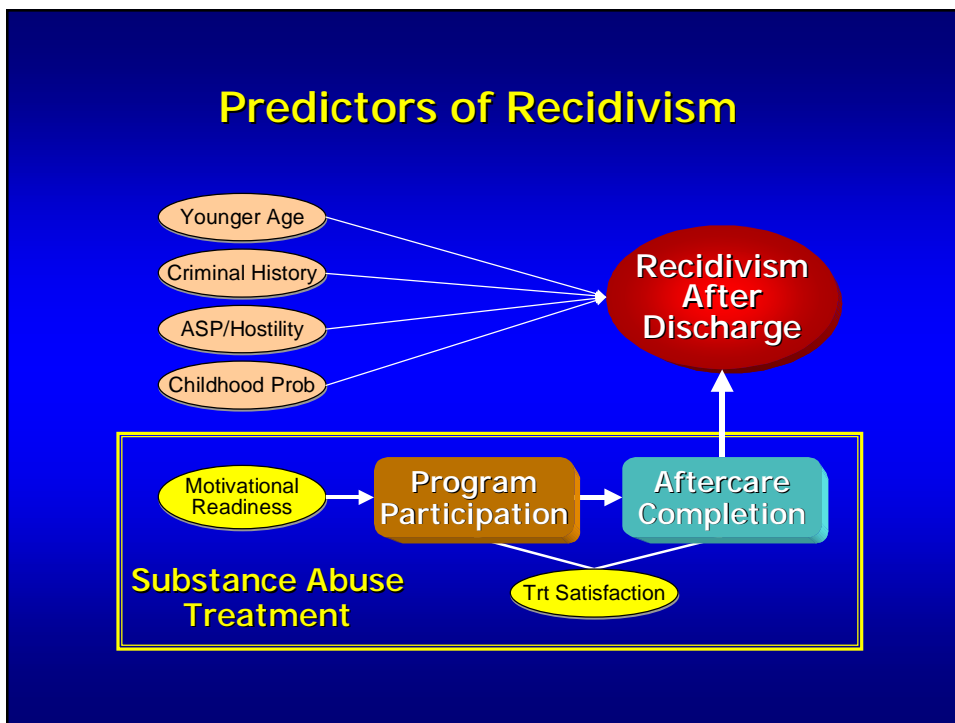
California R.J. Donovan/Amity Program: 3-Year Outcomes for "Return to Custody"



Treatment in Correction Settings

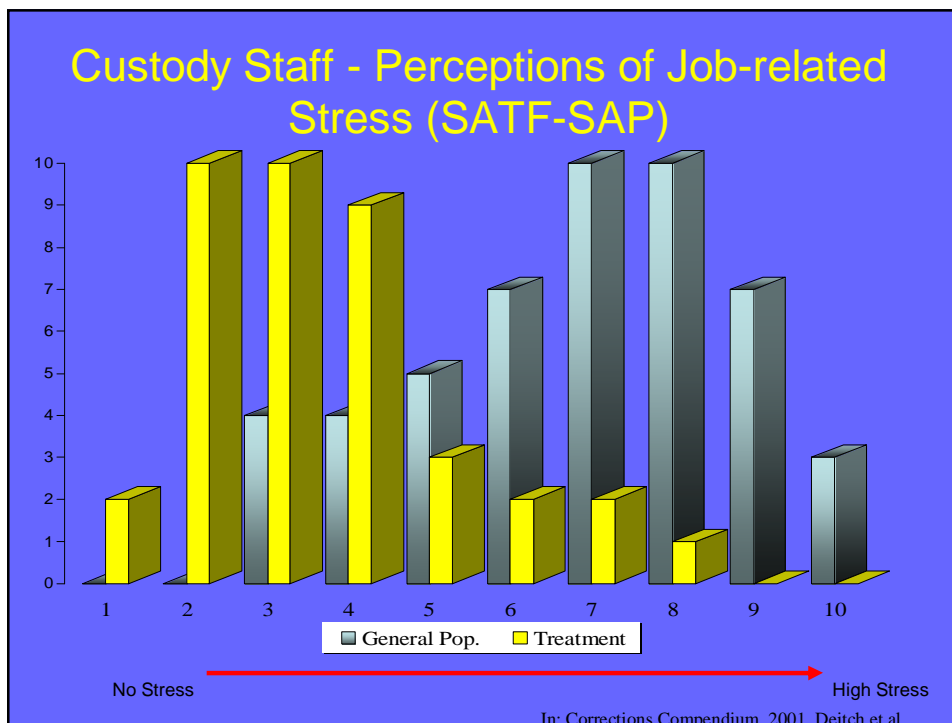


Predictors of Recidivism

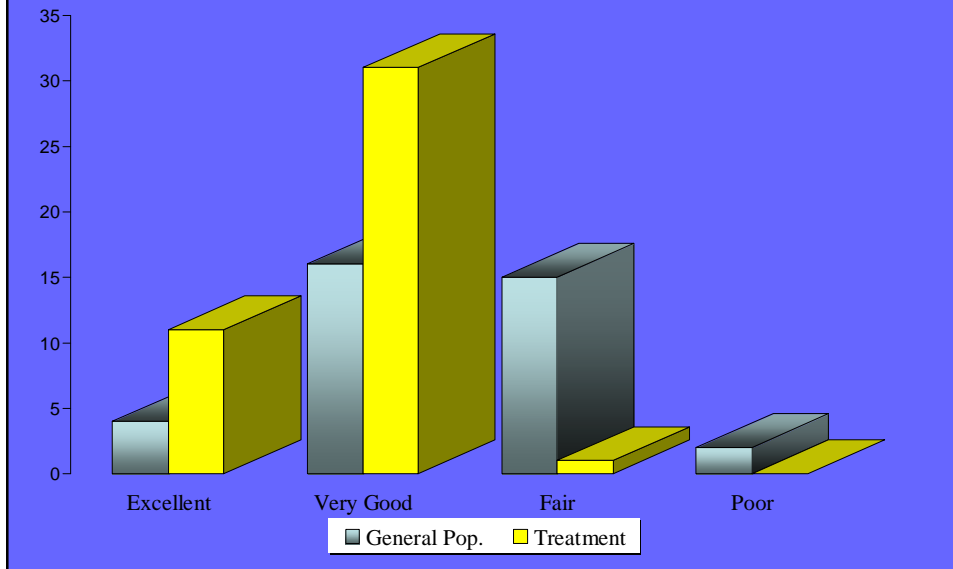


Some Findings & Recommendations

- § **Therapeutic Community appears to be the most effective treatment model for custody settings.**
 - § Boot camps & periodic drug-focused counseling have poor outcomes
 - § Selective education, 12-step, cognitive-behavioral therapies & programs that use agonists (such as methadone) show promise
- § **TC model is most effective for high-risk cases.**
- § **Engagement in transitional aftercare is *crucial* for effectiveness.**
- § **In prison TC shows increased job satisfaction, perception of health and lowered stress level for custody staff.**



Effects of Treatment Environment on Custody Staff: Perception of Health



Female Felon New Admission By Type of Offense

