



OAS | CICAD

**INTER-AMERICAN DRUG ABUSE
CONTROL COMMISSION
CICAD**

Secretariat for Multidimensional Security

**SIXTY-FIFTH REGULAR SESSION OF CICAD
May 8 - 10, 2019
Buenos Aires, Argentina**

**OEA/Ser.L/XIV. 1.65
CICAD/doc.2475/19
8 May 2019
Original:**

NATIONAL PREVENTION PLAN ELIGE VIVIR SIN DROGAS



NATIONAL PREVENTION PLAN ELIGE VIVIR SIN DROGAS

eligevivir
— SIN DROGAS —



SENDA
Ministerio del Interior
y Seguridad Pública

Gobierno de Chile

May 8, 2019.

I. ASSESSMENT IN CHILEAN STUDENTS

Chilean school students are the **Top 1** users of tobacco, marijuana, cocaine, cocaine paste and tranquilizers (not prescribed) in the Americas.

Main indicators of substance use in Chilean students (8th to 12th grade) Source: SENDA 2017

	Alcohol month	Tobacco daily	Marijuana year	Cocaine year	Cocaine paste year	Tranquilizers s/r year
Prevalence 2017	31,1%	4,3%	30,9%	3,0%	1,4%	8,6%
Population (N)	292.455	40.610	290.843	28.611	13.393	81.270
Ranking Americas*	10	1	1	1	1	1
Age of onset (years)	13,7	13,8	14,4	15,1	14,1	13,9

Source: XIII National Study of Drugs in School Population, 2017

Reference: Inter-American Commission for the Control of Drug Abuse. (2019). Report on drug use in the Americas Washington, D.C. : Organization of American States. For Tobacco reference is made to the month consumption data.

s / r = without a prescription

II. NATIONAL PREVENTION PLAN

eligevivir
— SIN DROGAS —

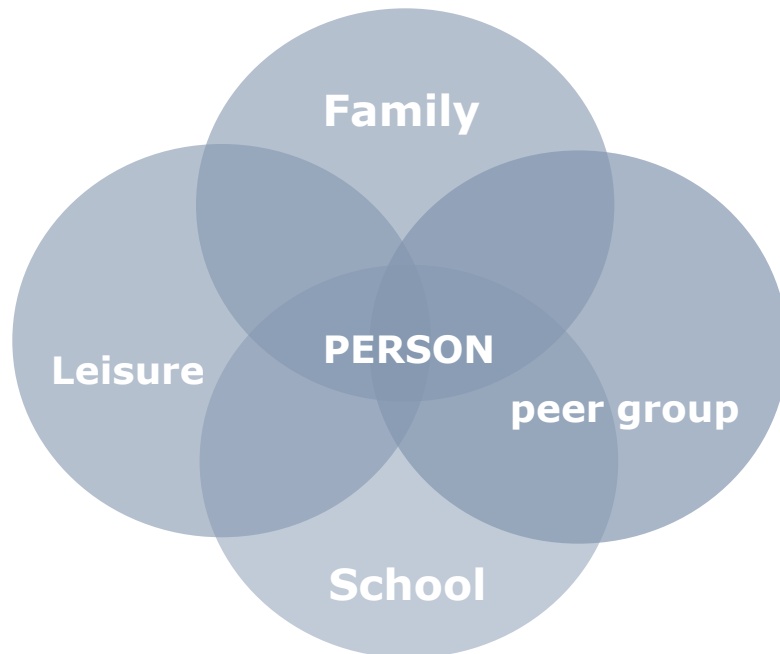
National Prevention Plan *Elige Vivir Sin Drogas*

Elige Vivir Sin Drogas is inspired by the successful **Planet Youth Iceland Model**. It includes the contribution of medical and scientific societies and the experience of civil society and local and national government.



Why the Icelandic model/Planet Youth?

Municipality



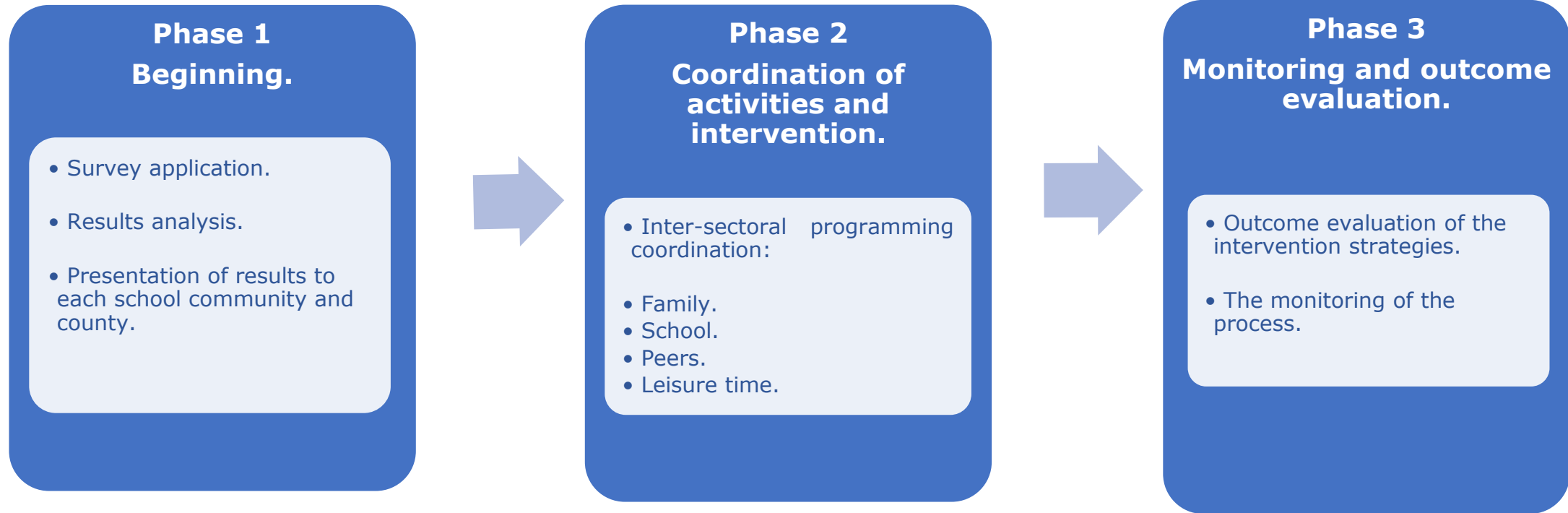
Evidence-based Program, which has demonstrated effectiveness to **decrease drug use prevalence in a significant and sustained way**.

Cost-effective Program, which **fosters coordination** among SENDA and other government offices and allows **capitalizing previously made investments**.

Current community data allows to identify protective and risk factors with communal and **neighborhood specificity**.

Strengthens co-responsibility, through a **society agreement** at the **country and local level**, providing a **protective and inclusive discourse**.

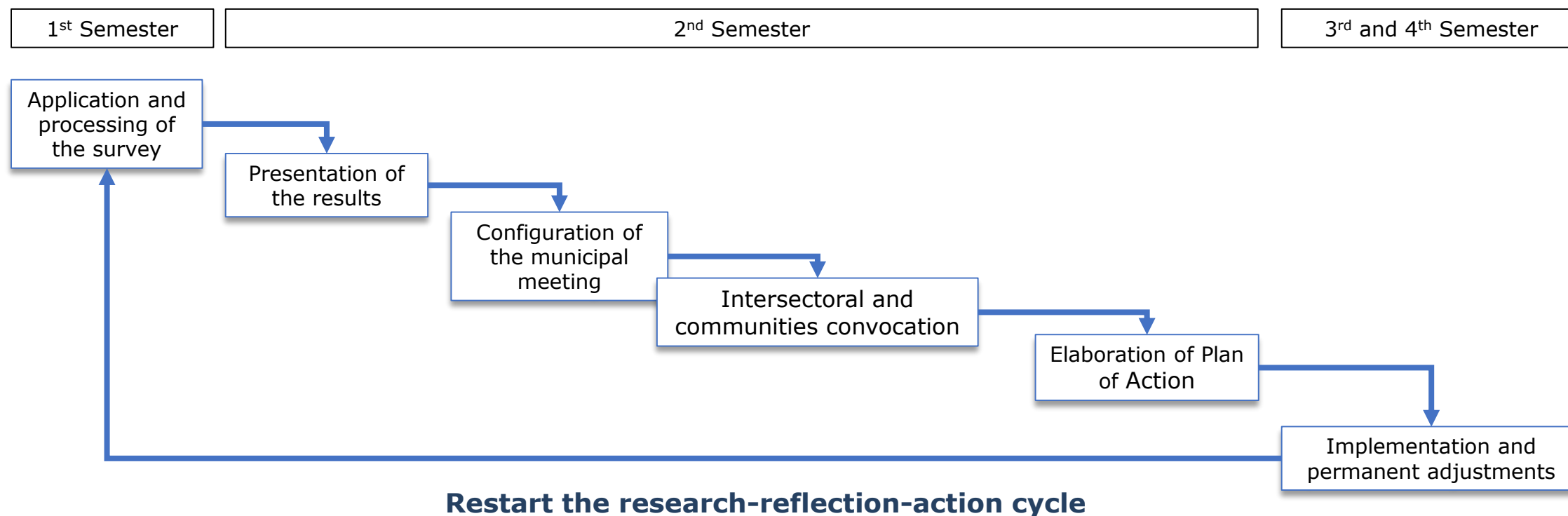
Phases of the National Prevention Plan *Elige Vivir Sin Drogas.*



GOAL:
Promote the social construction of an environment that gives children and adolescents more significant opportunities to choose behaviors and protective activities and reduces the risk of substance use.


National Prevention Plan *Elige Vivir Sin Drogas*

Biannual Cycle



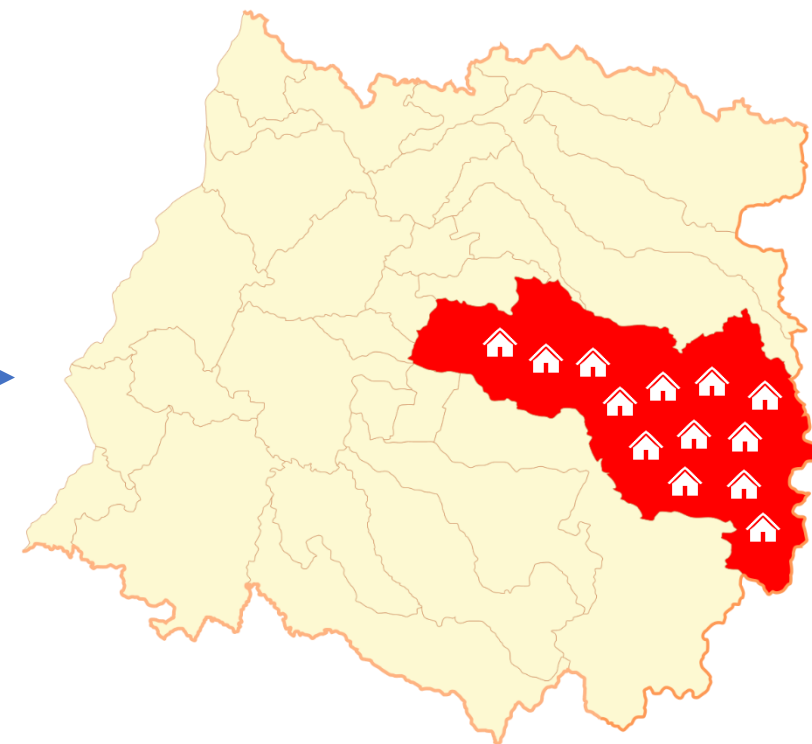
Phase 1: Beginning of the National Prevention Plan *Elige Vivir Sin Drogas*.

Contact, agreement, and commitment to the scope of the National Study of Drugs in the Student Population.

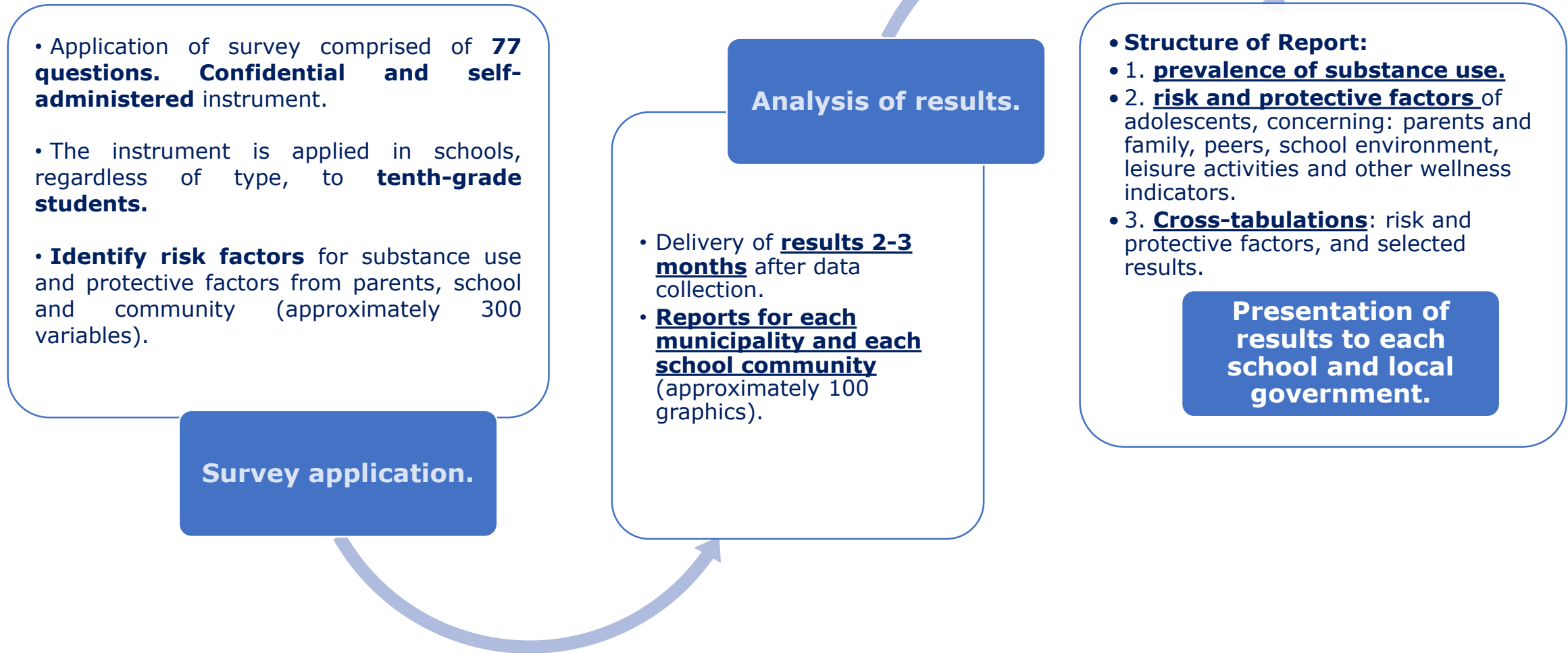


National Prevalence and Trends
Regional Prevalence and Trends
Protective (PF) and Risk Factors (RF)

Local prevalence
Prevalence by school
PF and RF specific for communities
Evaluation of results and achievements



Phase 1: Beginning of the National Prevention Plan *Elige Vivir Sin Drogas*.



Phase 1: Assessment



Contact Schools



School Commitment



Information about number of students per school



Deliver material to the School



The School appoints a teacher in charge of the survey



We send letter to the parents to obtain informed consent



Survey application in 10th grade students



Information registry per each course



Packing and storage of responded surveys



Pick up boxes

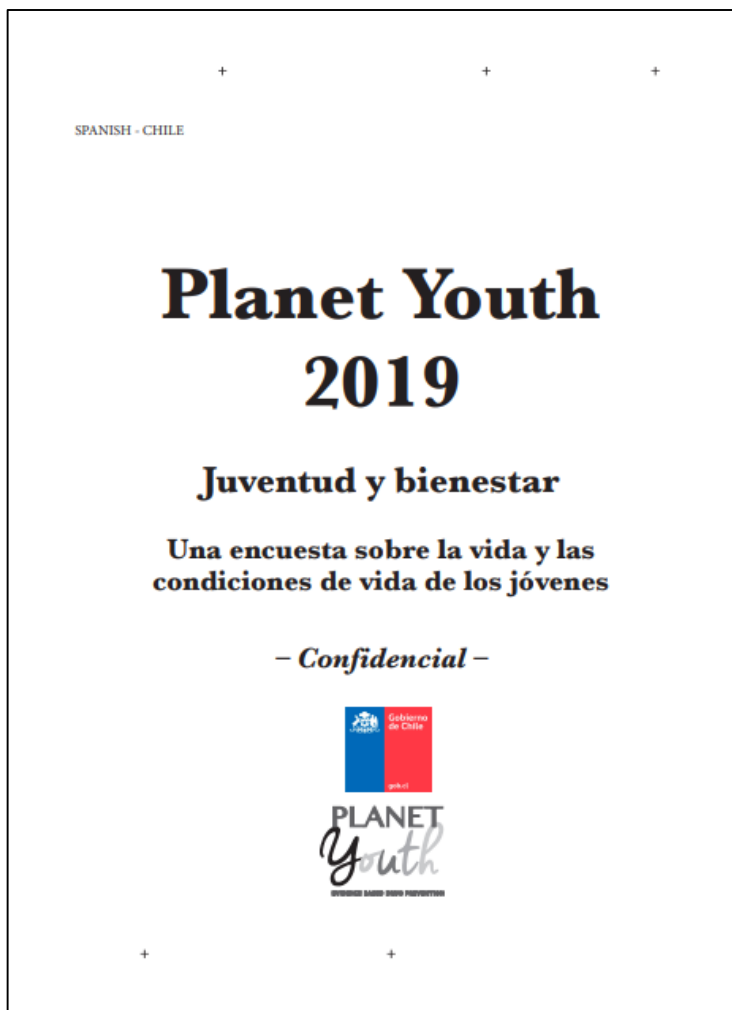


Data Base is sent to Island



Reporting

Instrument characteristics



28 pages



77 questions



60 minutes



Use of envelope

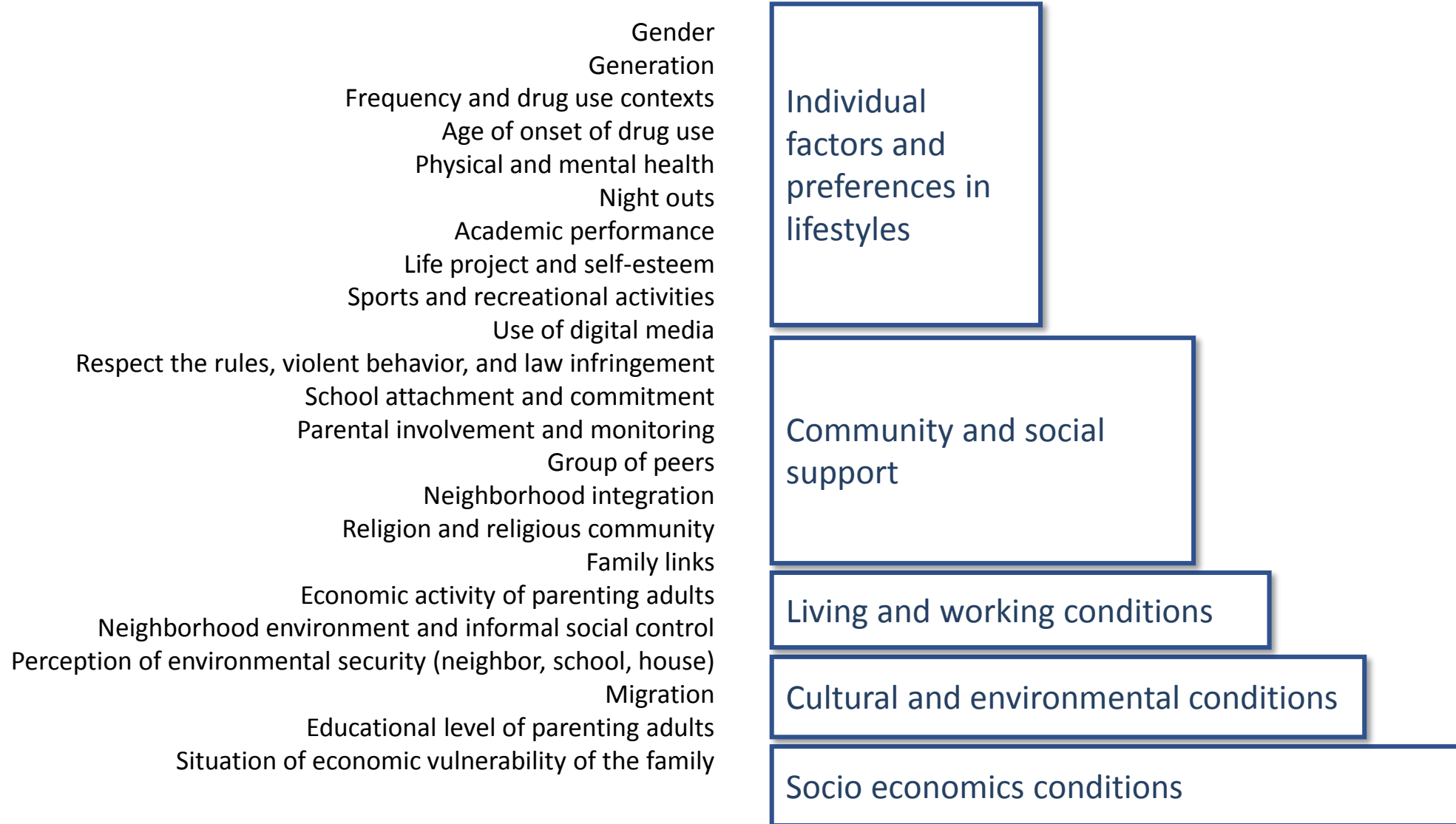


Black or blue ink



Multiple selection answers

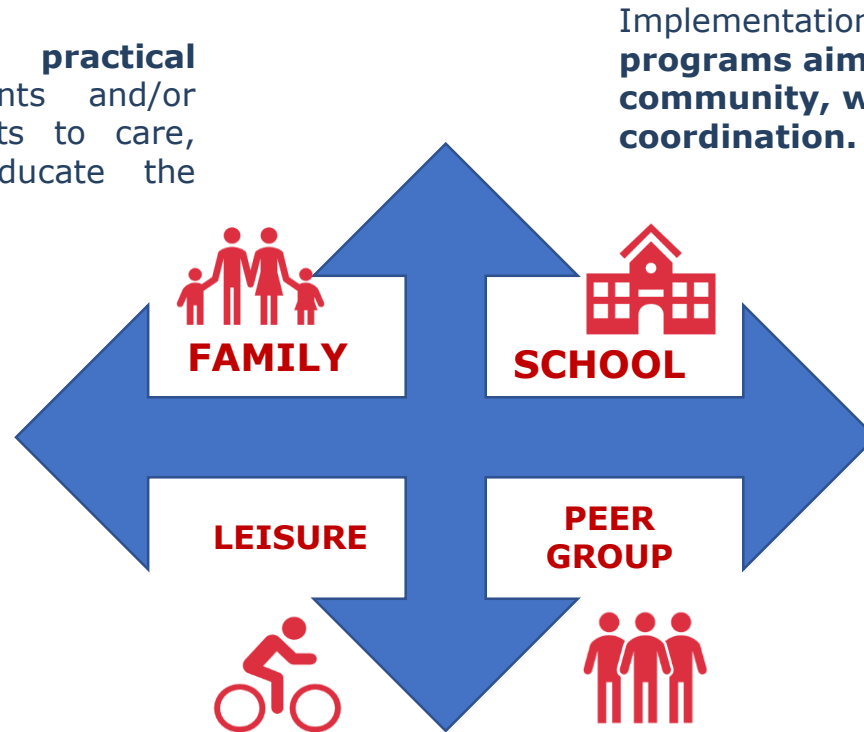
Social Determinants of Health in Survey “Youth and Wellbeing”



Phase 2: Coordination of activities and intervention.

Phase 3: Monitoring and outcome evaluation.

Enhance the practical skills of parents and/or responsible adults to care, protect, and educate the children.



Implementation of **prevention programs aimed at school community, with intersectoral coordination.**

Model Monitoring

Outcome Evaluation

Evaluation at years 2 and 5

Provide feedback to intersectoral and community teams

Coordinate the infrastructure, resources (**community, school, municipal and statal**) and existing public spaces to effectively promote the positive use of free time.

Enhance the capacities of young people to be **social agents** of prevention to their peers and strengthen **protective factors**.



PILOT IMPLEMENTATION IN 6 COUNTIES

Colina - Las Condes - Lo Barnechea - Melipilla - Peñalolén - Renca

Phase 1 Beginning of the Model. ✓

- Application of survey.
- Outcome analysis.
- Presentation of results to each school community and county.

Phase 2 Coordination of activities and intervention.

- Intersectoral coordination.
- Needs assessment vs local availability of services.
- Elaboration of Working Plan and distribution of local resources.

Phase 3 Monitoring and outcome evaluation.

- Program monitoring.
- Outcome evaluation.
- Provide feedback to intersectoral and community teams.

Trends of Substance Use in Iceland 1998 - 2018

