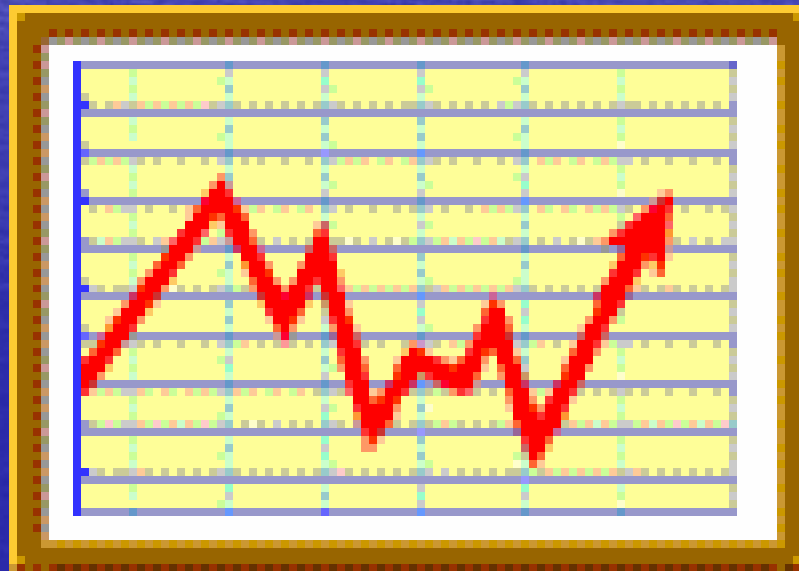
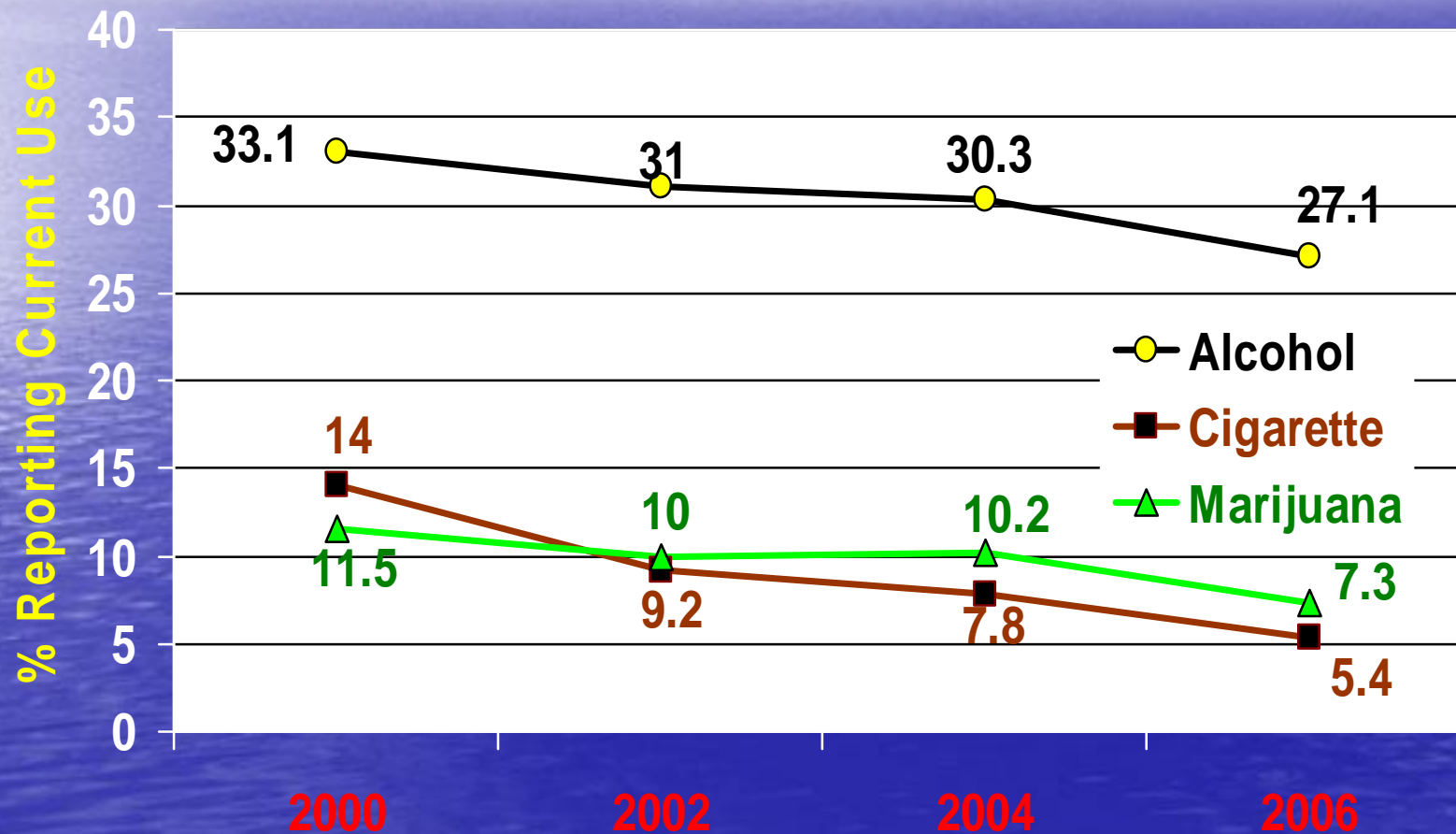


Prevalence of Current (Past 30 Day) Student Use of Alcohol, Marijuana and Tobacco

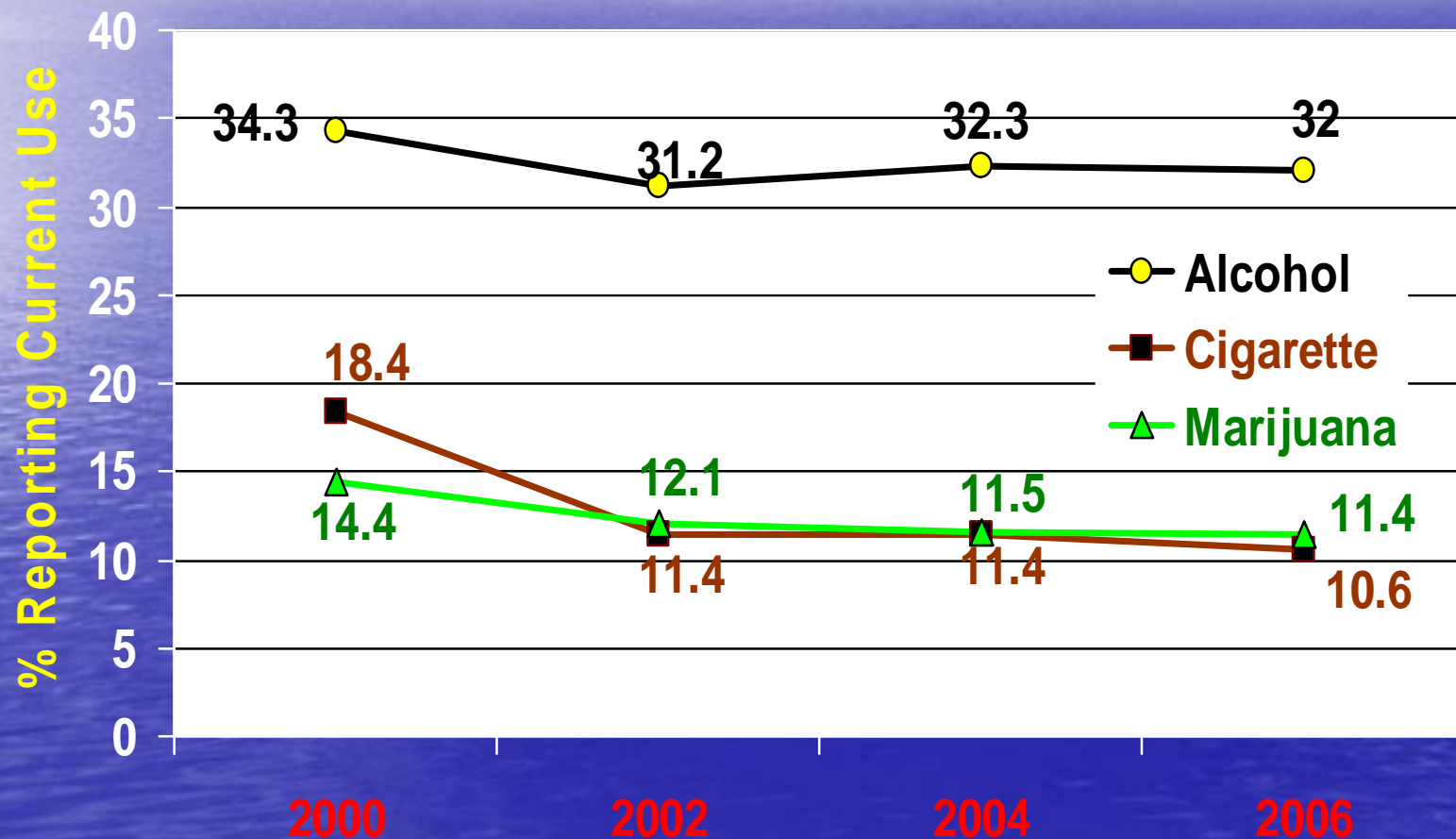


Current (past 30-day) Drug Use By Broward County, Florida Middle & High School Students 2000-2006



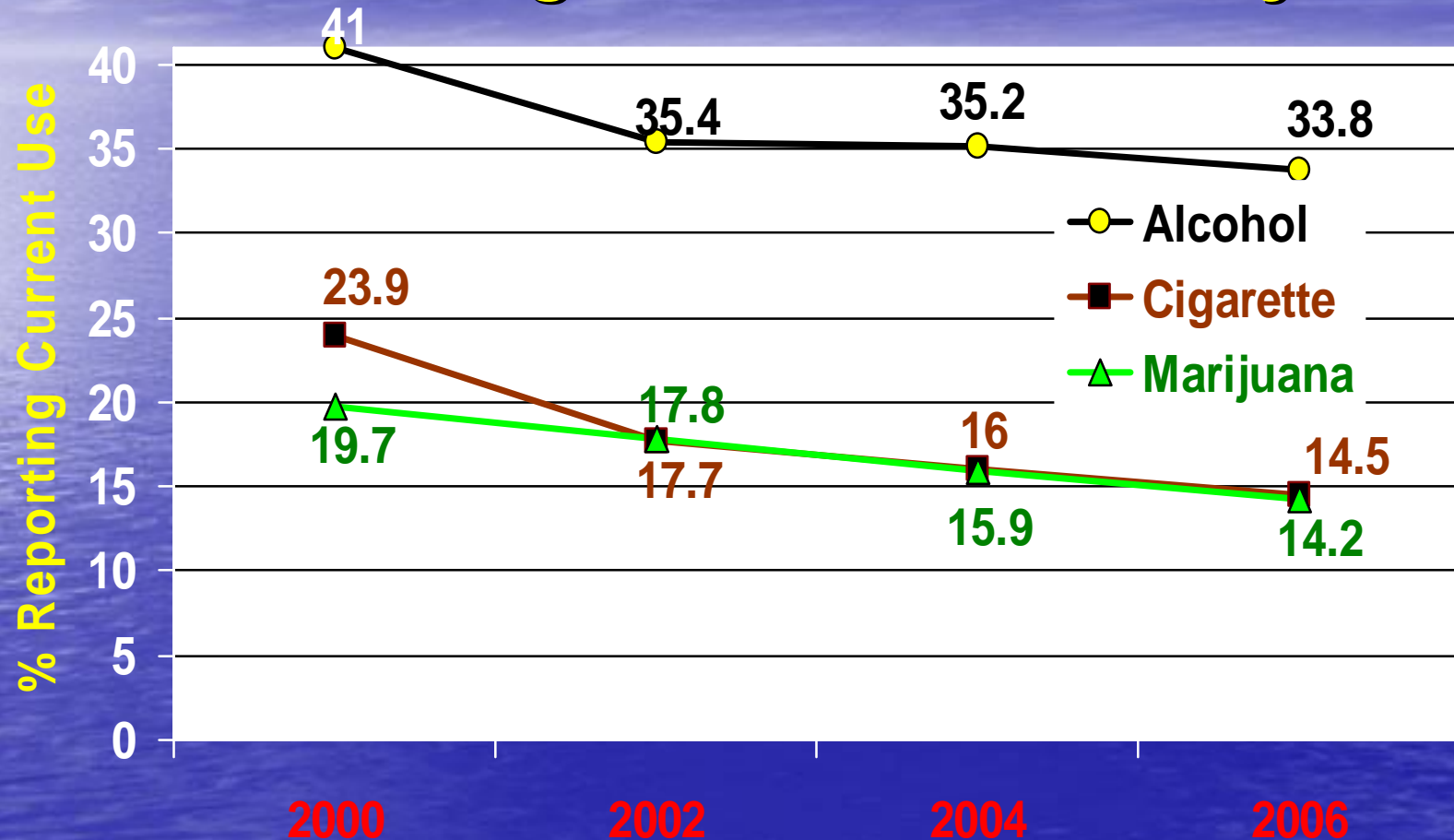
Source: Florida Youth Substance Abuse Surveys 2000-2006

Current (past 30-day) Drug Use Among Florida County Middle and High School Students 2000-2006



Source: Florida Youth Substance Abuse Surveys 2000-2006

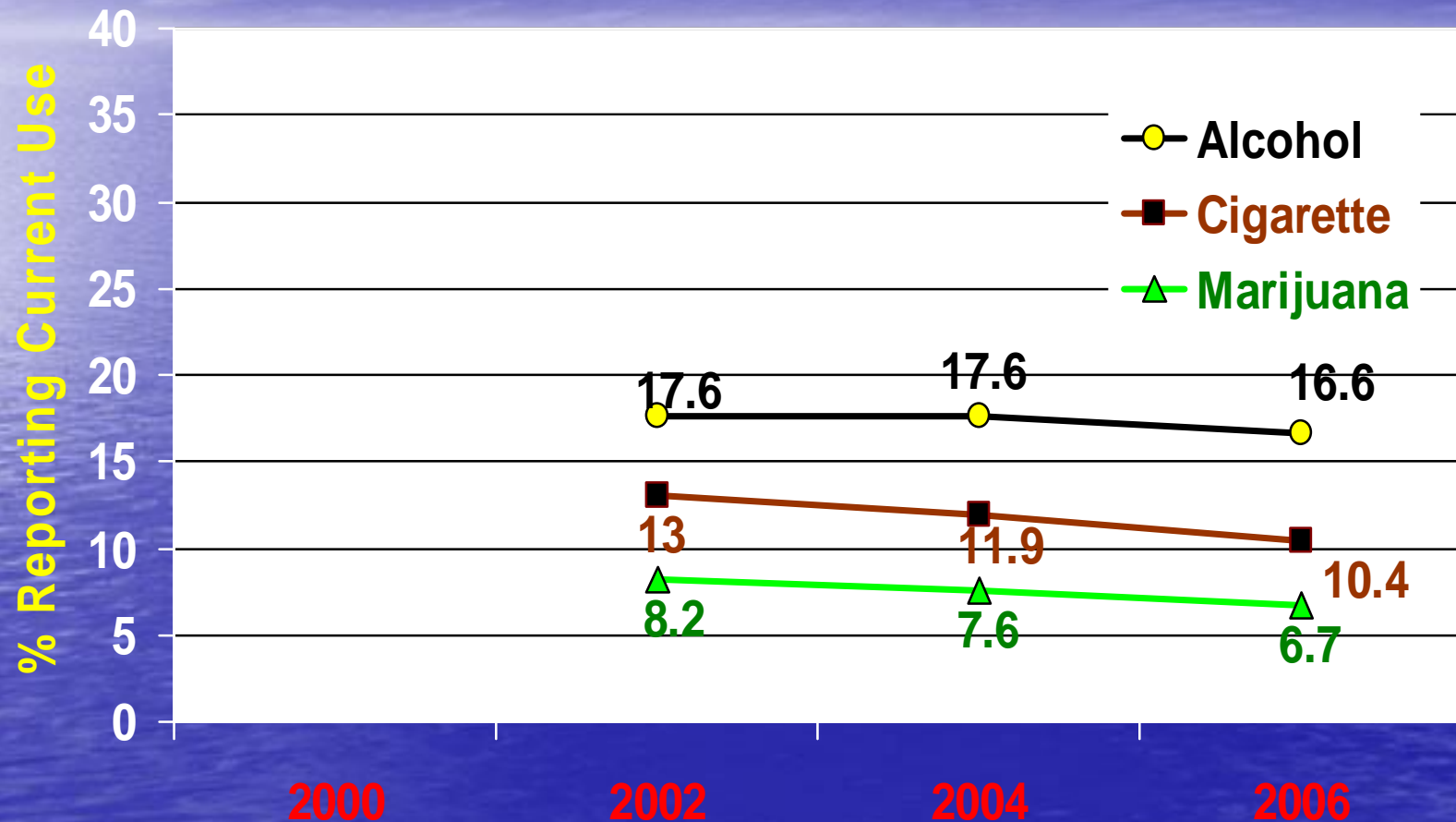
Current (past 30-day) Drug Use Among USA 10th Graders 2000-2006 Monitoring the Future Survey



Source: NIDA - Monitoring the Future Survey 2000-2006
University of Michigan

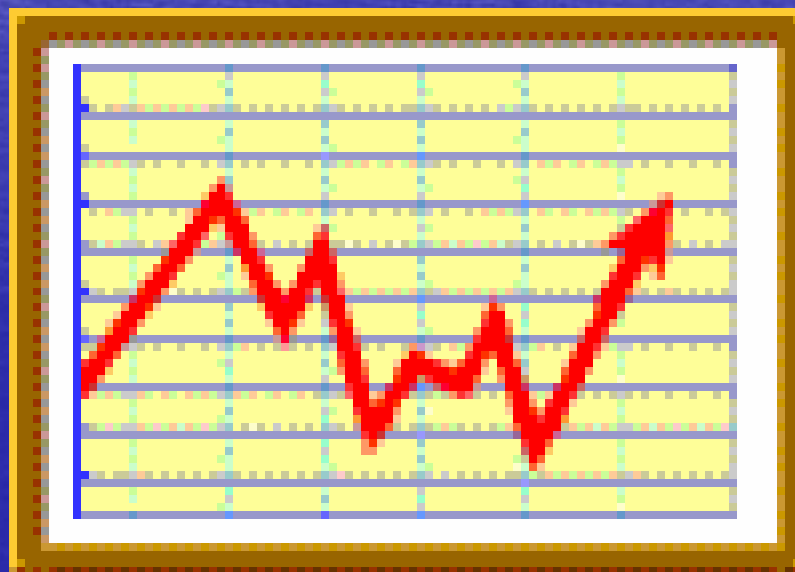
Current (past 30-day) Drug Use Among USA Youth Age 12-17 2002-2006

National Household Survey



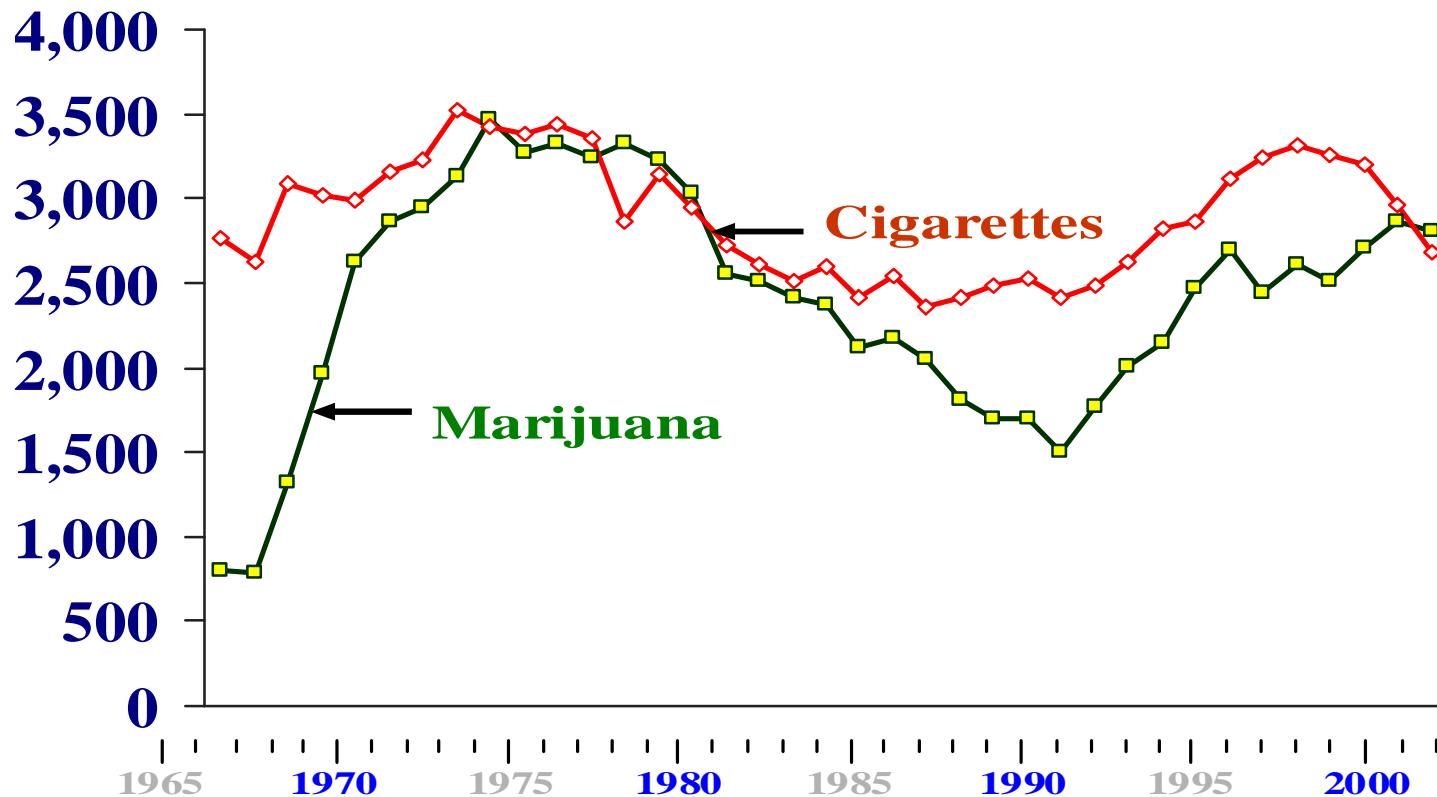
Source: Substance abuse & Mental Health Services Administration
National Survey on Drug Use and Health 2002-2006

Incidence: First Time Use of Marijuana and Tobacco



Annual Numbers of New Users of Marijuana and Cigarettes USA: 1965-2001

Thousands of New Users

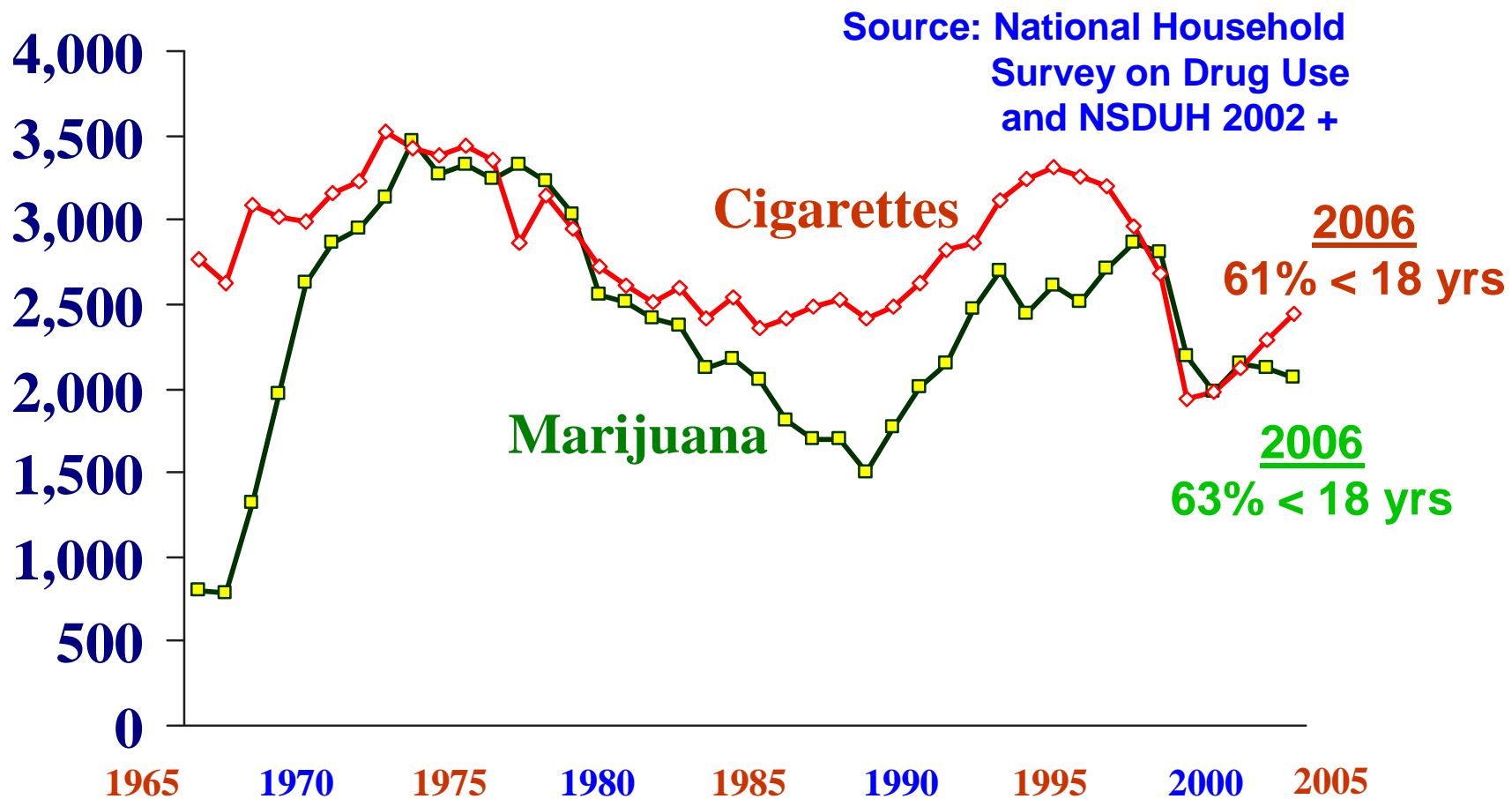


Sources: National Household Survey on Drug Use 2001

US Dept of Health and Human Services SAMHSA: Office of Applied Studies

Annual Numbers of New Users of Marijuana & Cigarettes: 1965-2006

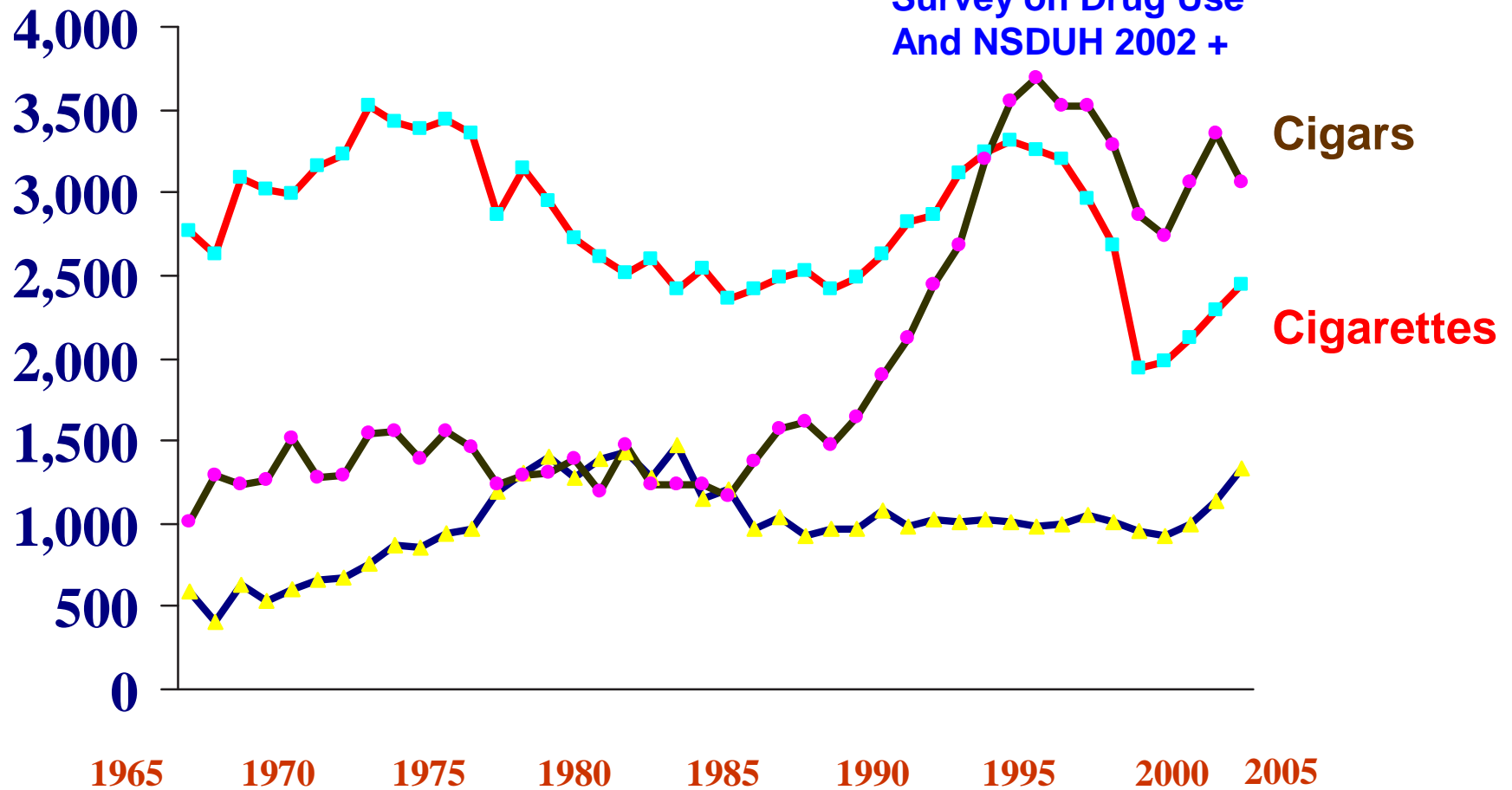
Thousands of New Users



Annual Numbers of New Users of Tobacco 1965-2006

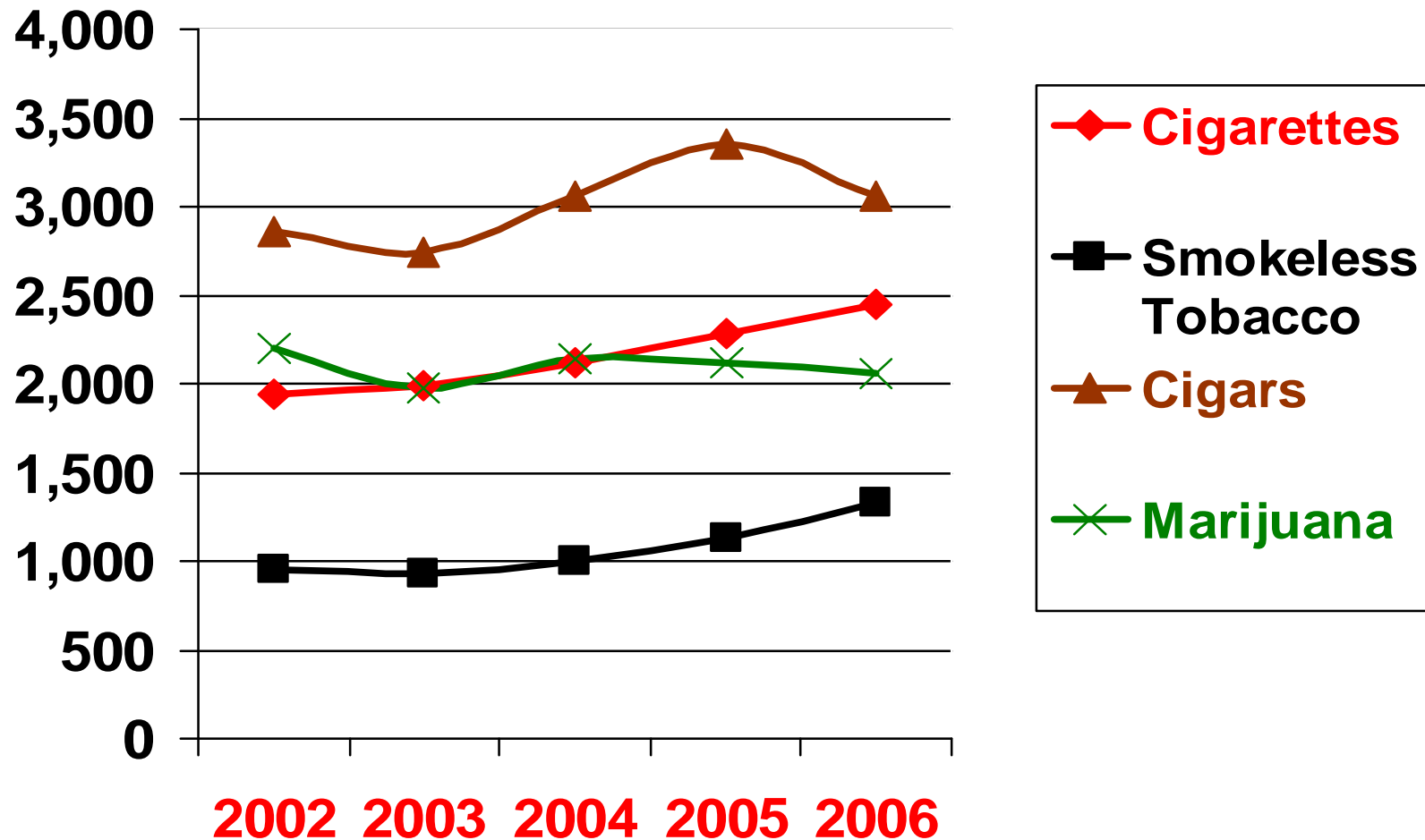
Thousands of New Users

Source: National Household Survey on Drug Use And NSDUH 2002 +



Annual Numbers of New Users of Marijuana & Tobacco USA: 2002-2006

Thousands of New Users



Sources: National Survey on Drug Use and Health 2006
US Dept of Health and Human Services SAMHSA: Office of Applied Studies

Age at First Use of Marijuana

In 2006, among adults aged 18 or older who first tried marijuana at **age 14 or younger**, **12.9 percent** were classified **with illicit drug dependence or abuse**, higher than the **2.2 percent** of adults who had first used marijuana at age 18 or older.

Source: SAMHSA OAS -National Survey on Drug Use and Health 2006

Upfrontin@aol.com

Center for the
Study and
Prevention of
Substance Abuse

Nova Southeastern
University

